

PART 8

MANAGEMENT STRUCTURE

Management Structure

Full Members of the Strategic Management Team (SMT)*

- Chief Executive
- Deputy Chief Executive
- City Treasurer
- City Solicitor
- Strategic Director of Children's Services
- Executive Director of Strategic Commissioning/Director of Adult Social Services**
- Strategic Director (Development)

Chief Officers

- The full members of SMT
- Director of Population Health and Wellbeing**

Statutory Officers

- | | |
|-------------------------------------|---|
| • Head of Paid Service | - Chief Executive |
| • Chief Finance Officer | - City Treasurer |
| • Monitoring Officer | - City Solicitor |
| • Director of Children's Services | - Strategic Director of Children's Services |
| • Director of Adult Social Services | - Executive Director of Strategic Commissioning / Director of Adult Social Services** |
| • Director of Public Health | - Director of Population Health and Wellbeing** |
| • Deputy Chief Finance Officer | - Deputy City Treasurer |
| • Deputy Monitoring Officer | - Deputy City Solicitor |
| • Scrutiny Officer | - Governance and Scrutiny Support Unit Manager |

*While other senior officers may attend SMT on an occasional or regular basis, only the listed officers are considered full members of SMT for the purposes of Part 8 of the Council's Constitution.

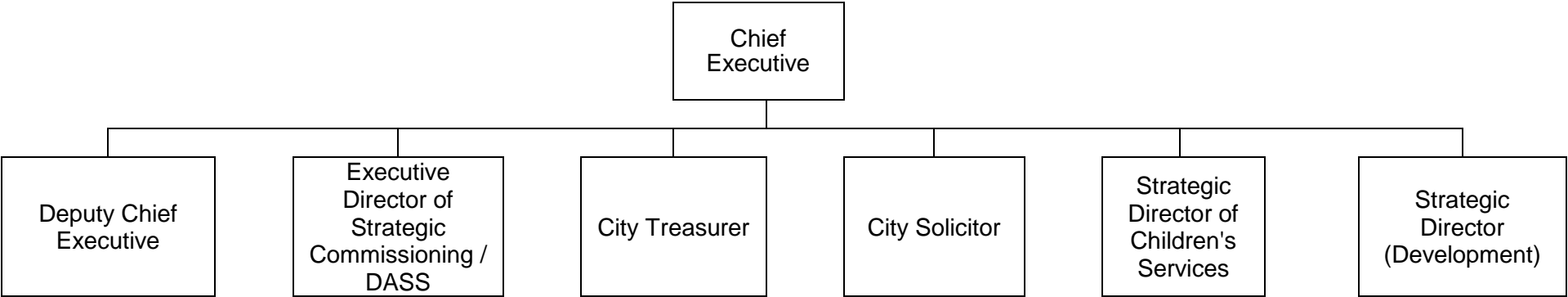
**The Director of Strategic Commissioning (with DASS responsibilities) and the Director of Population Health and Wellbeing sit on the Single Commissioning Function Executive Leadership Team reporting to the Chief Officer of the Single Commissioning Function. The posts also have reporting lines to the Council's Chief Executive in relation to their statutory Local Authority duties.

Deputy Chief Officers/Heads of Service

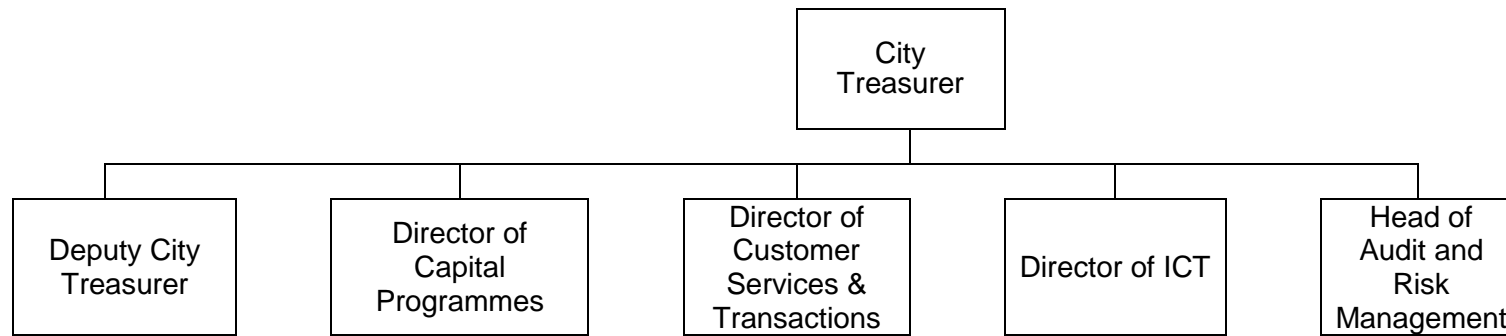
Directorate/Division	Deputy Chief Officer/Head of Service
Corporate Core: Corporate Services	Deputy City Treasurer Director of Capital Programmes Director of Customer Services & Transactions Director of ICT Head of Audit & Risk Management
Corporate Core: City Solicitor's	Deputy City Solicitor
Neighbourhoods	Chief Operating Officer: Neighbourhoods Director of Operations (Highways)
Corporate Core: excluding the Corporates Services and City Solicitor's Divisions	Director of HROD Director of Strategic Communications Head of Reform & Innovation Head of Policy, Partnerships & Research Head of Performance, Research & Intelligence
Children and Families: Adult Social Services	Director of Adult Services Deputy Director of Adult Social Services Head of Homelessness
Children and Families: Children's Services	Deputy Director of Children's Services Director of Education Head of Safeguarding Quality Assurance
Strategic Development:	Director of Housing & Residential Growth Director of Development & Corporate Estate Head of City Centre Growth & Regeneration Head of Work & Skills Head of Planning, Licensing & Building Control

Additional information on the Council's structure is published within the 'Open Data' section of the Council website in accordance with the DCLG Code of Recommended Practice on Data Transparency.

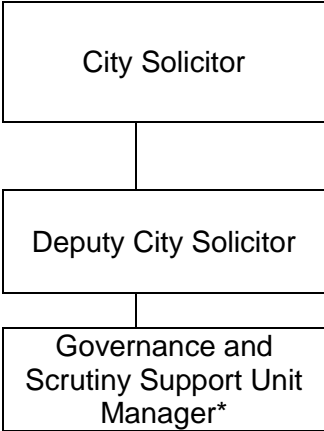
Full Members of the Strategic Management Team (SMT)



Corporate Core: Corporate Services

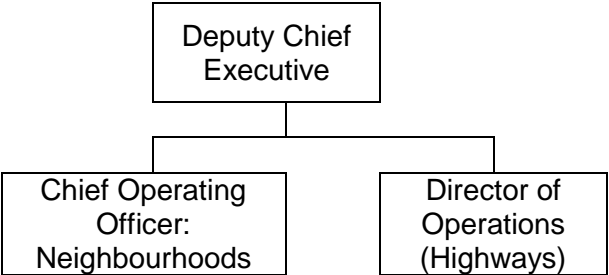


Corporate Core: City Solicitor's

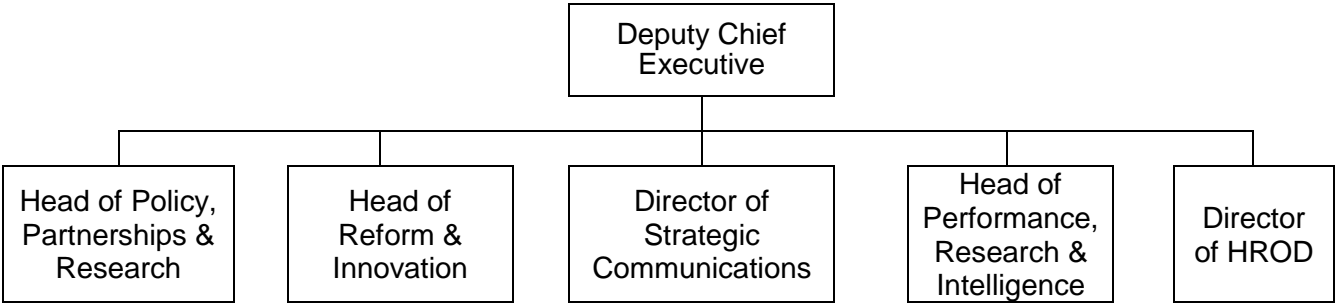


*Indirect report. Reports to Deputy City Solicitor via Head of Governance

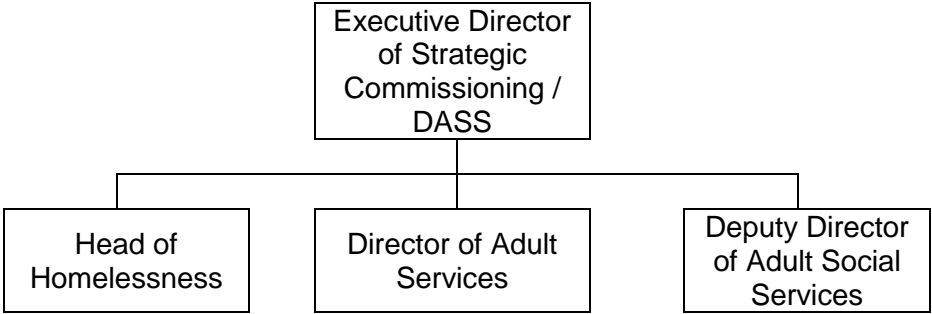
Directorate for Neighbourhoods



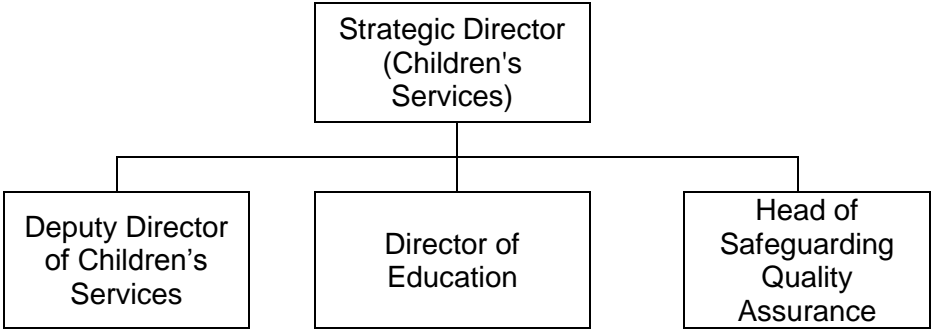
Corporate Core: excluding the Corporates Services and City Solicitor’s Divisions



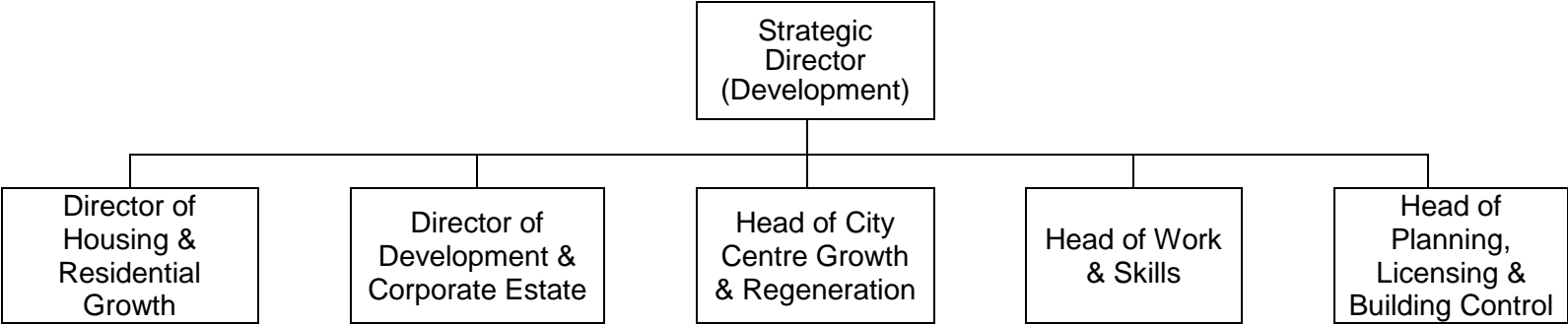
Directorate for Children & Families: Adult Social Services



Directorate for Children & Families: Children’s Services



Strategic Development



Chief Executive’s Direct Reports (Non-SMT)

